



**Bike Tarrytown**

[@BikeTarrytown](#)

[Read on Twitter](#)

Dear [@SenKennedy](#) & [@BillMagnarelli](#): Congratulations on becoming Chairs of your houses in the [#NYSLegislature](#). Some thoughts to keep in mind when making policy. (cc [@BikeNYBC](#) [@transalt](#) [@StreetsblogNYC](#) [@NYC SafeStreets](#))

1) Transportation choices are shaped by public policy.

People who drive aren't an ever growing constituency to be placated



Travel choices are shaped by public policy



**BIKE TARRYTOWN**



2) We need to give people safe, convenient transportation choices. Example, loads of people want to cycle places, but they're [#2scared2bike](#).

People who bike aren't a fixed number of constituents to be placated



We are an untapped resource to be cultivated





3) Transportation is the #1 cause of injury death for kids and #2 for adults. But it doesn't have to be this way. Mortality rate in Netherlands is 1/4 of ours. That's because of good engineering ([#VisionZero](#), transit, etc).

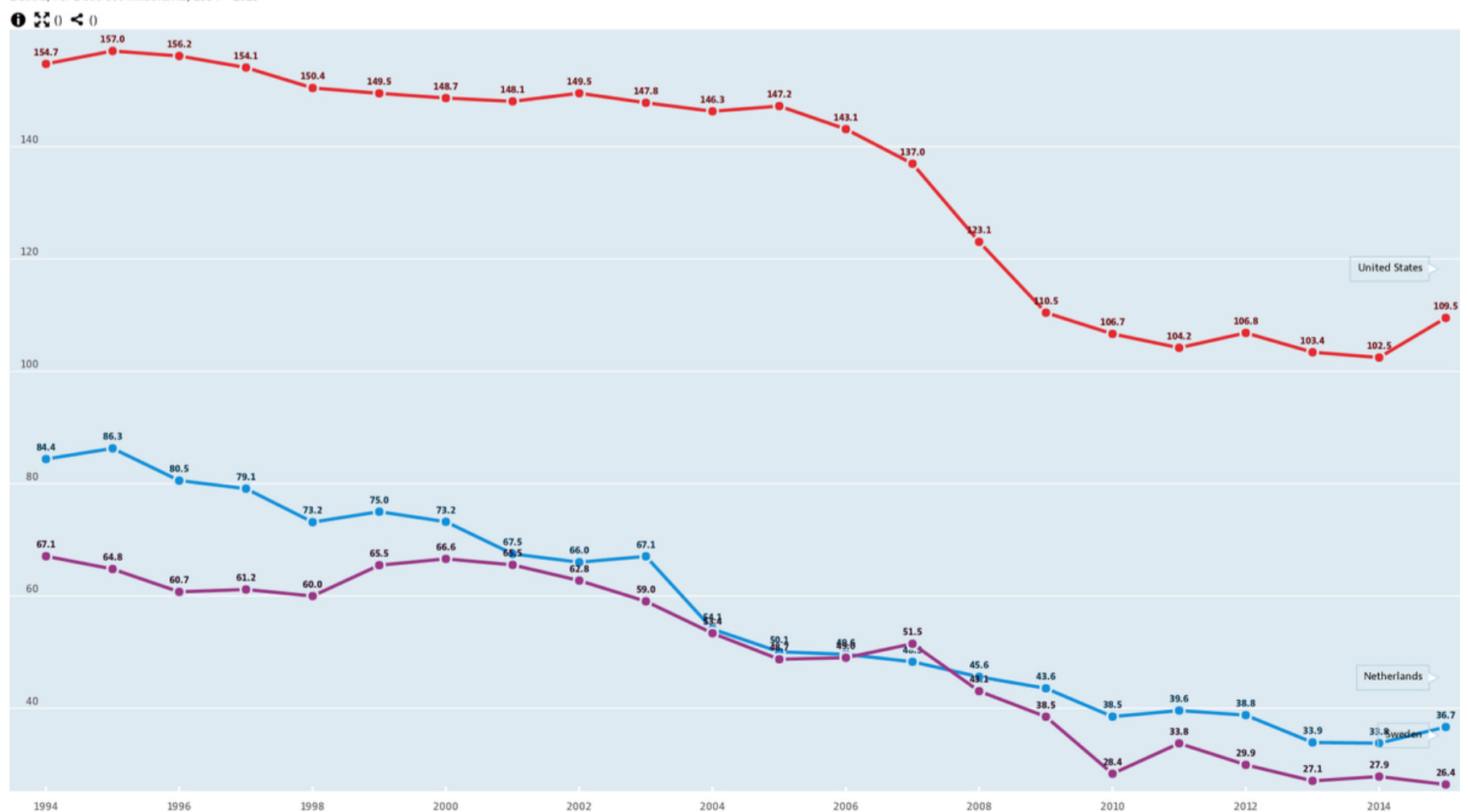
**10 Leading Causes of Injury Deaths, United States  
2016, All Races, Both Sexes**

WISQARS, Produced By: National Center for Injury Prevention and Control, Centers for Disease Control and Prevention  
Data Source: National Center for Health Statistics (NCHS), National Vital Statistics System

Rank	Age Groups										All Ages
	<1	1-4	5-9	10-14	15-24	25-34	35-44	45-54	55-64	65+	
1	Unintentional Suffocation 1,023	Unintentional Drowning 425	Unintentional MV Traffic 384	Unintentional MV Traffic 455	Unintentional MV Traffic 7,037	Unintentional Poisoning 14,631	Unintentional Poisoning 13,278	Unintentional Poisoning 13,439	Unintentional Poisoning 9,438	Unintentional Fall 29,668	Unintentional Poisoning [drug overdose] 58,335
2	Homicide Unspecified 132	Unintentional MV Traffic 334	Unintentional Drowning 147	Suicide Suffocation 247	Unintentional Poisoning 4,997	Unintentional MV Traffic 7,010	Unintentional MV Traffic 5,075	Unintentional MV Traffic 5,536	Unintentional MV Traffic 5,397	Unintentional MV Traffic 7,429	Unintentional MV Traffic 38,748
3	Unintentional MV Traffic 88	Unintentional Suffocation 118	Unintentional Fire/burn 78	Suicide Firearm 160	Homicide Firearm 4,553	Homicide Firearm 4,510	Suicide Firearm 3,099	Suicide Firearm 3,873	Suicide Firearm 4,067	Suicide Firearm 5,756	Unintentional Fall 34,673
4	Homicide Other Spec., classifiable 63	Homicide Unspecified 114	Homicide Firearm 68	Unintentional Drowning 103	Suicide Firearm 2,683	Suicide Firearm 3,298	Homicide Firearm 2,555	Suicide Suffocation 2,112	Unintentional Fall 2,679	Unintentional Unspecified 5,021	Suicide Firearm 22,938
5	Undetermined Suffocation 60	Unintentional Fire/burn 107	Unintentional Suffocation 35	Homicide Firearm 95	Suicide Suffocation 2,100	Suicide Suffocation 2,643	Suicide Suffocation 2,199	Suicide Poisoning 1,736	Suicide Poisoning 1,538	Unintentional Suffocation 3,631	Homicide Firearm 14,415
6	Undetermined Unspecified 38	Unintentional Pedestrian, Other 82	Unintentional Other Land Transport 24	Unintentional Other Land Transport 64	Unintentional Drowning 530	Undetermined Poisoning 855	Suicide Poisoning 1,144	Homicide Firearm 1,420	Suicide Suffocation 1,474	Unintentional Poisoning 2,458	Suicide Suffocation 11,642
7	Unintentional Drowning 38	Homicide Firearm 64	Unintentional Pedestrian, Other 18	Unintentional Fire/burn 52	Suicide Poisoning 426	Suicide Poisoning 767	Undetermined Poisoning 788	Unintentional Fall 1,238	Unintentional Suffocation 792	Adverse Effects 2,028	Suicide Poisoning 6,698
8	Homicide Suffocation 19	Homicide Other Spec., classifiable 64	Unintentional Firearm 16	Unintentional Suffocation 39	Homicide Cut/pierce 340	Unintentional Drowning 463	Unintentional Fall 515	Undetermined Poisoning 929	Homicide Firearm 738	Unintentional Fire/burn 1,150	Unintentional Suffocation 6,610
9	Adverse Effects 18	Unintentional Firearm 34	Unintentional Struck by or Against 15	Unintentional Poisoning 28	Undetermined Poisoning 289	Homicide Cut/pierce 420	Unintentional Drowning 396	Unintentional Drowning 478	Undetermined Poisoning 707	Suicide Poisoning 1,070	Unintentional Unspecified 6,507
10	Unintentional Natural/Environment 18	Unintentional Poisoning 34	Unintentional Other Transport 14	Unintentional Firearm 23	Unintentional Fall 199	Unintentional Fall 326	Homicide Cut/pierce 350	Unintentional Suffocation 419	Unintentional Unspecified 625	Suicide Suffocation 859	Undetermined Poisoning 3,827

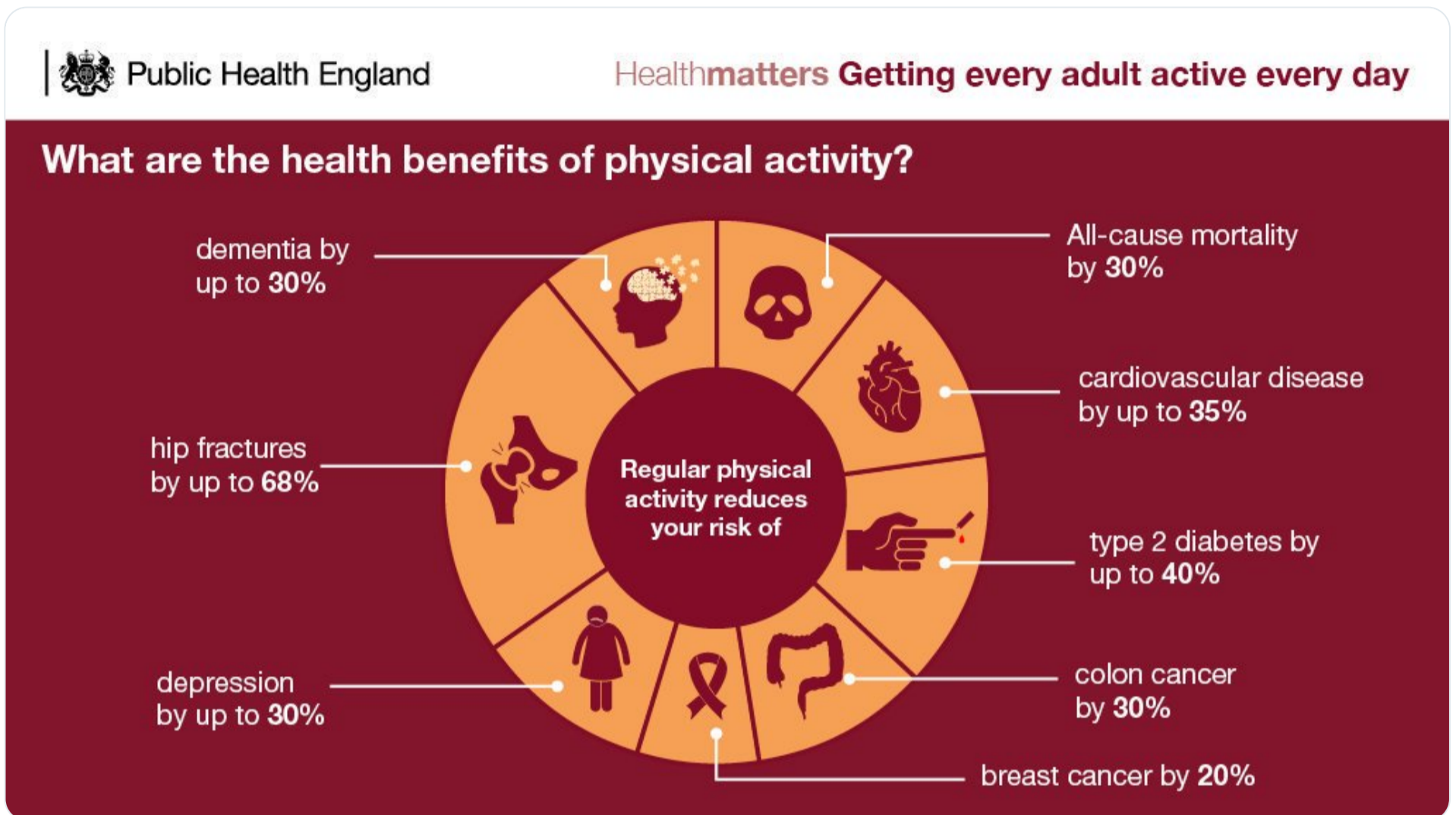
Road accidents ([//data.oecd.org/transport/road-accidents.htm](http://data.oecd.org/transport/road-accidents.htm))

Deaths, Per 1 000 000 inhabitants, 1994 - 2015

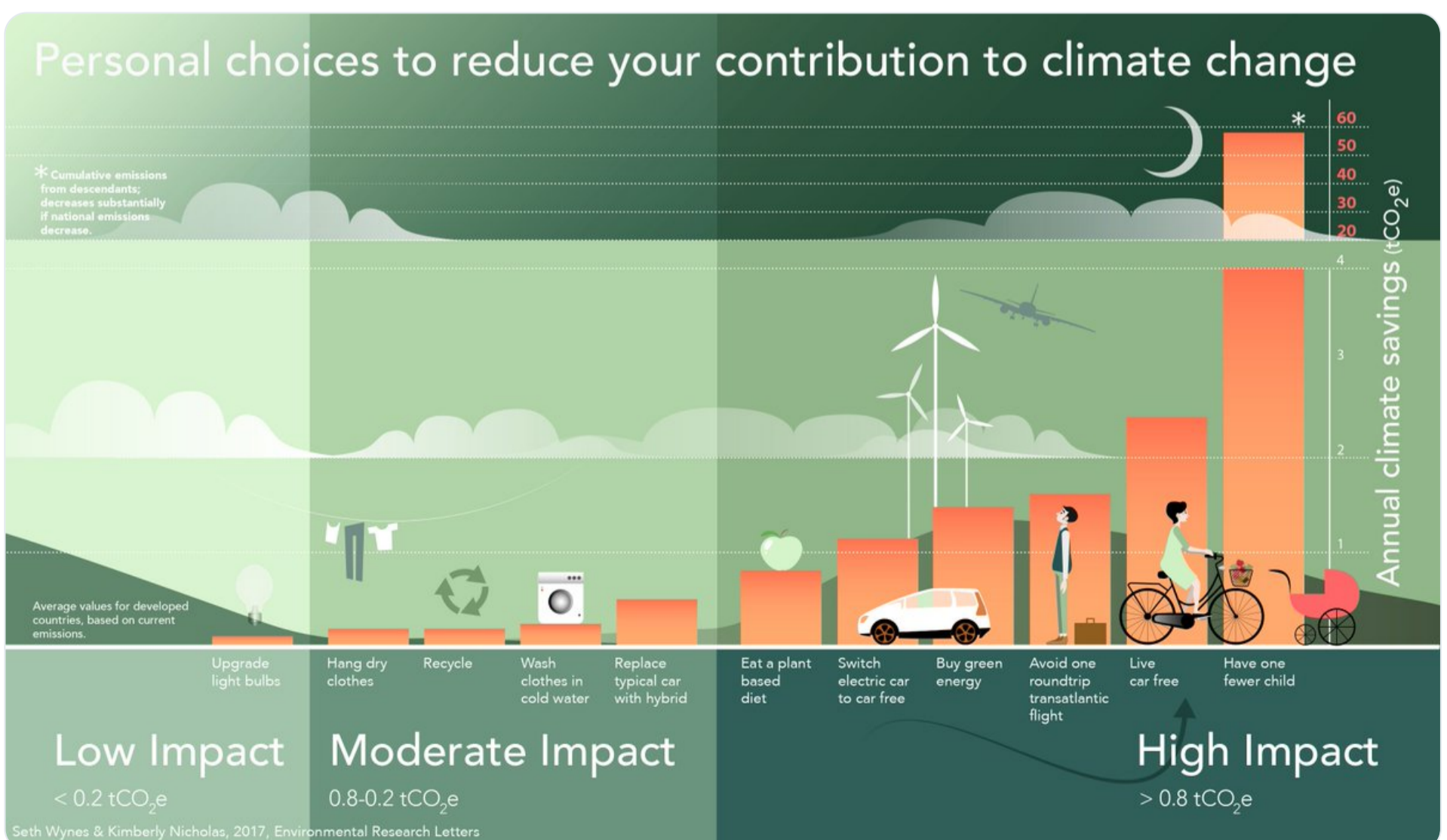




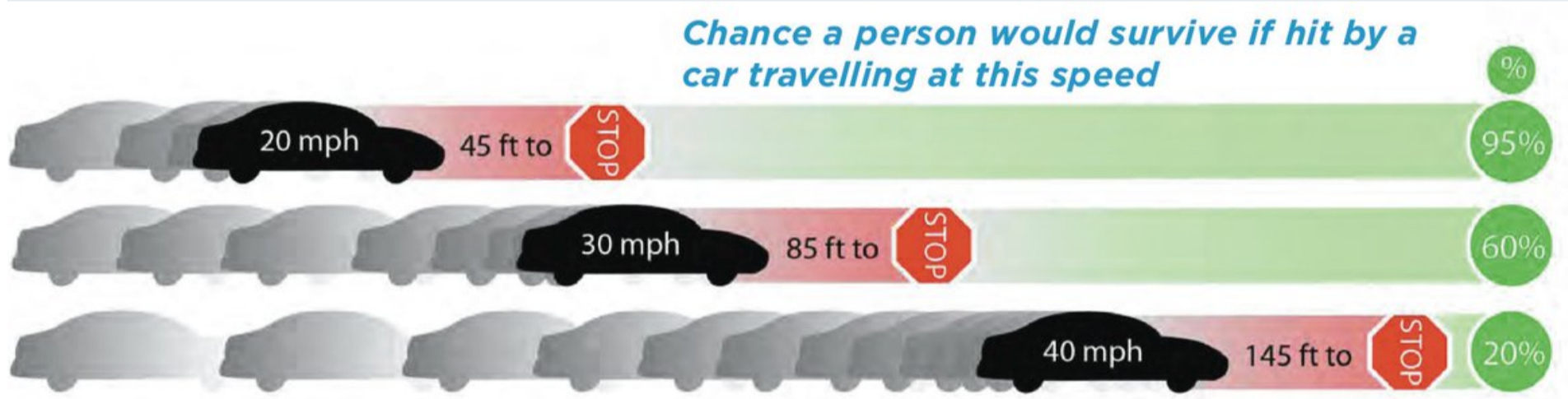
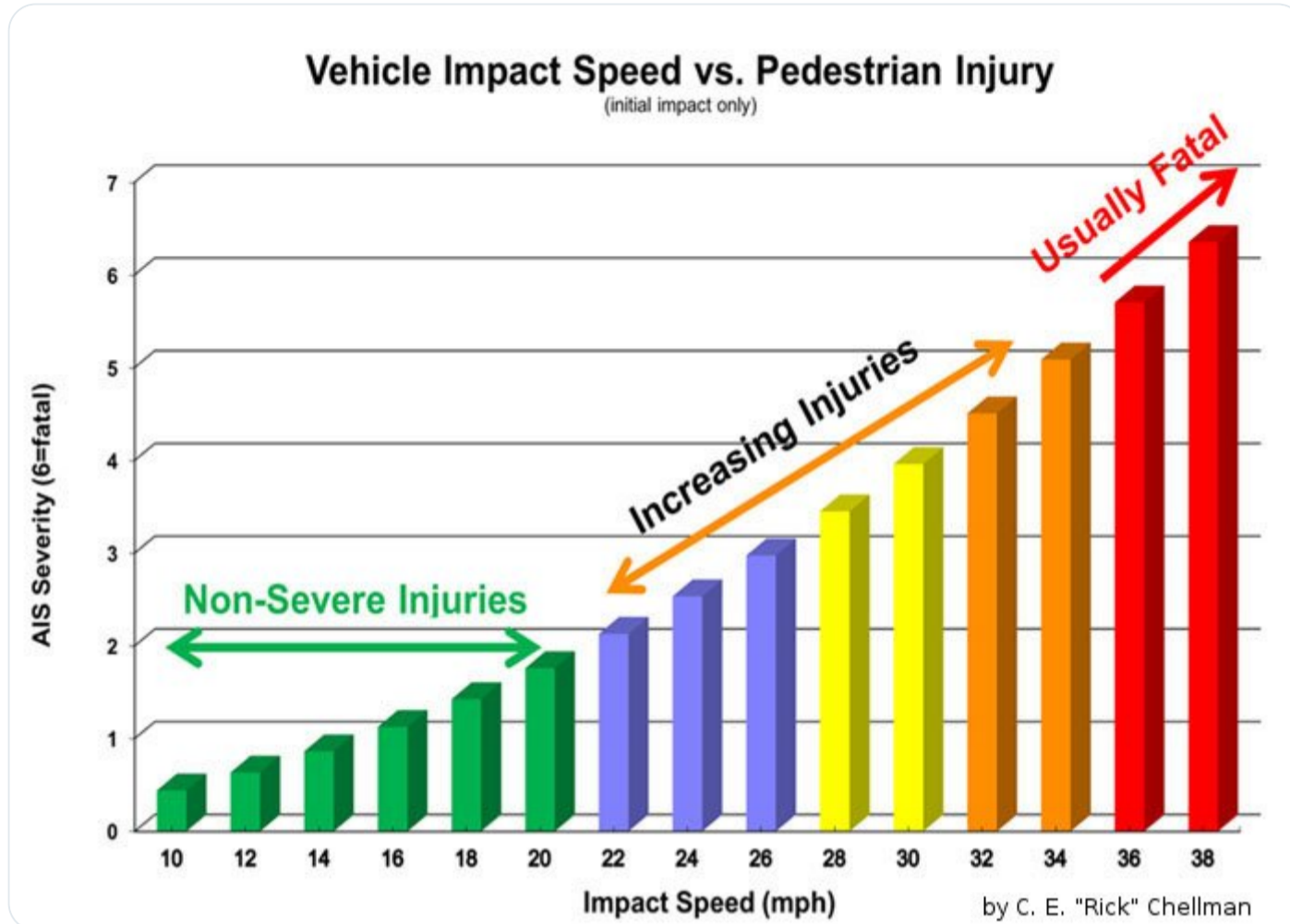
4) Transportation has a huge impact on public health. Creating safe infrastructure means people can [#walk](#) & [#bike](#) places, which inadvertently adds [#exercise](#) into their daily routines. Will save State \$ on [#HealthCare](#).



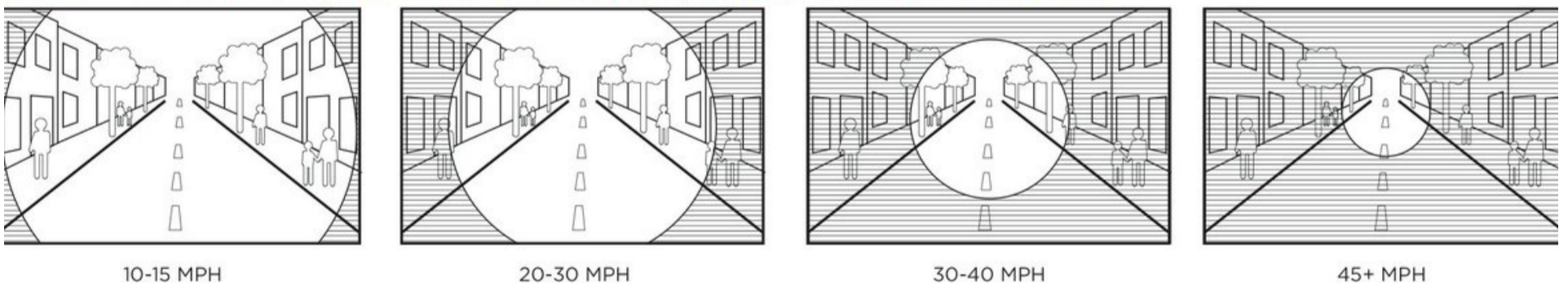
5) Transportation is now the leading cause of carbon emissions. [#bikes4climate](#) [#transit4climate](#) [#walk4climate](#)



6) [#SpeedKills](#). Speed limits on neighborhood streets should be 20 MPH ([#20isPlenty](#)). State law must be changed to allow this, or better yet, require it.



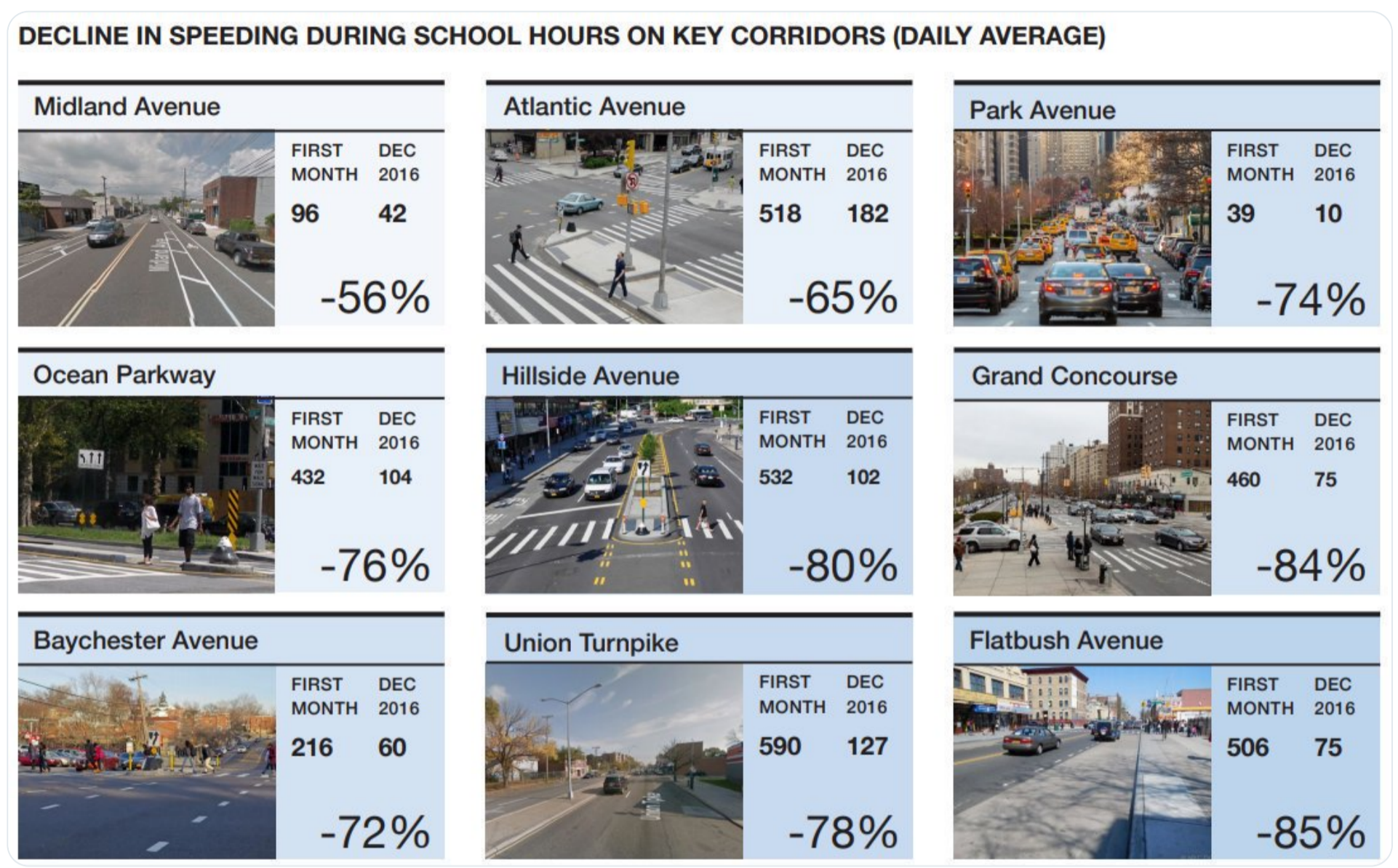
*Tunnel Vision: as speed increases, peripheral vision decreases.*





7) [#AutomatedEnforcement](#) [#SpeedCameras](#) & [#RedLightCameras](#) save lives. Right now, every camera requires legislation. This micromanagement is literally killing New Yorkers.

Legislature should set rules for where they can be installed & how to operate them, then get out of the way.



8) [@BikeNYBC](#) is advocating for a 3' passing law. (People driving must give people biking at least 3'.)

To be honest, at 40+ MPH, 3' is nowhere near enough. Should require drivers to change lanes to pass.



9) Allow Class 1 (pedal assist) [#ebikes](#). They get people out of cars, plus help older and disabled people.





10) Dramatically increase [#infrastructure](#) funding for people walking, cycling and using transit.

11) [@MoveNewYork](#) [#CongestionPricing](#) plan is crucial for [#NYC](#).

12) The [#cycling](#)/[#walking](#) path on the [#TappanZeeBridge](#)/[#CuomoBridge](#) (& all bridges in NYS) must be open 24/7.

Any other policy means the government is dictating how and when people can travel. Such social engineering has no place in the 21st Century. [biketarrytown.org/tappan-zee-bri...](http://biketarrytown.org/tappan-zee-bri...)

13) That's all we can think of at this hour. Again, congratulations. Make New York proud. Excelsior!