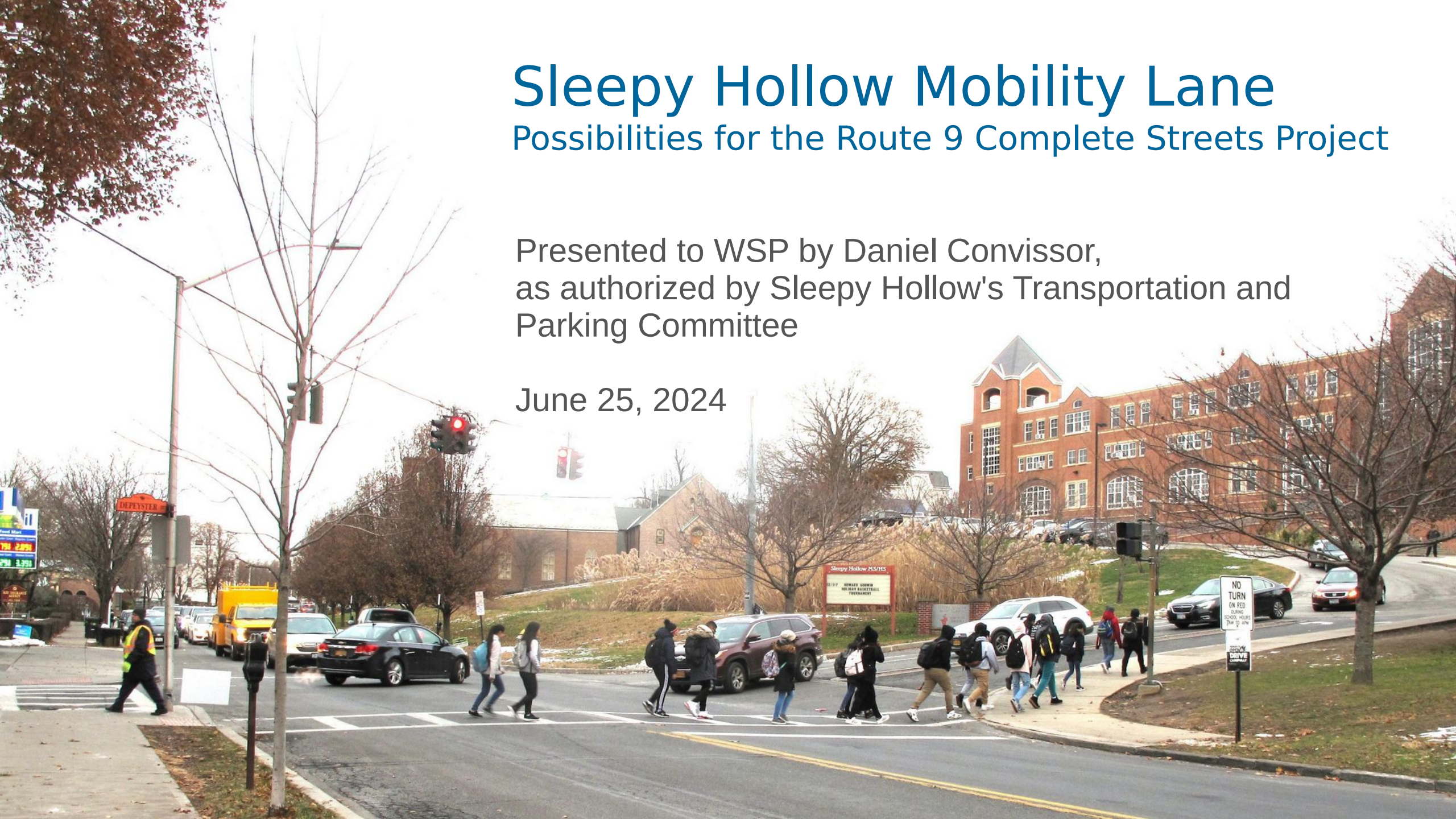


Sleepy Hollow Mobility Lane

Possibilities for the Route 9 Complete Streets Project

Presented to WSP by Daniel Convissor,
as authorized by Sleepy Hollow's Transportation and
Parking Committee

June 25, 2024

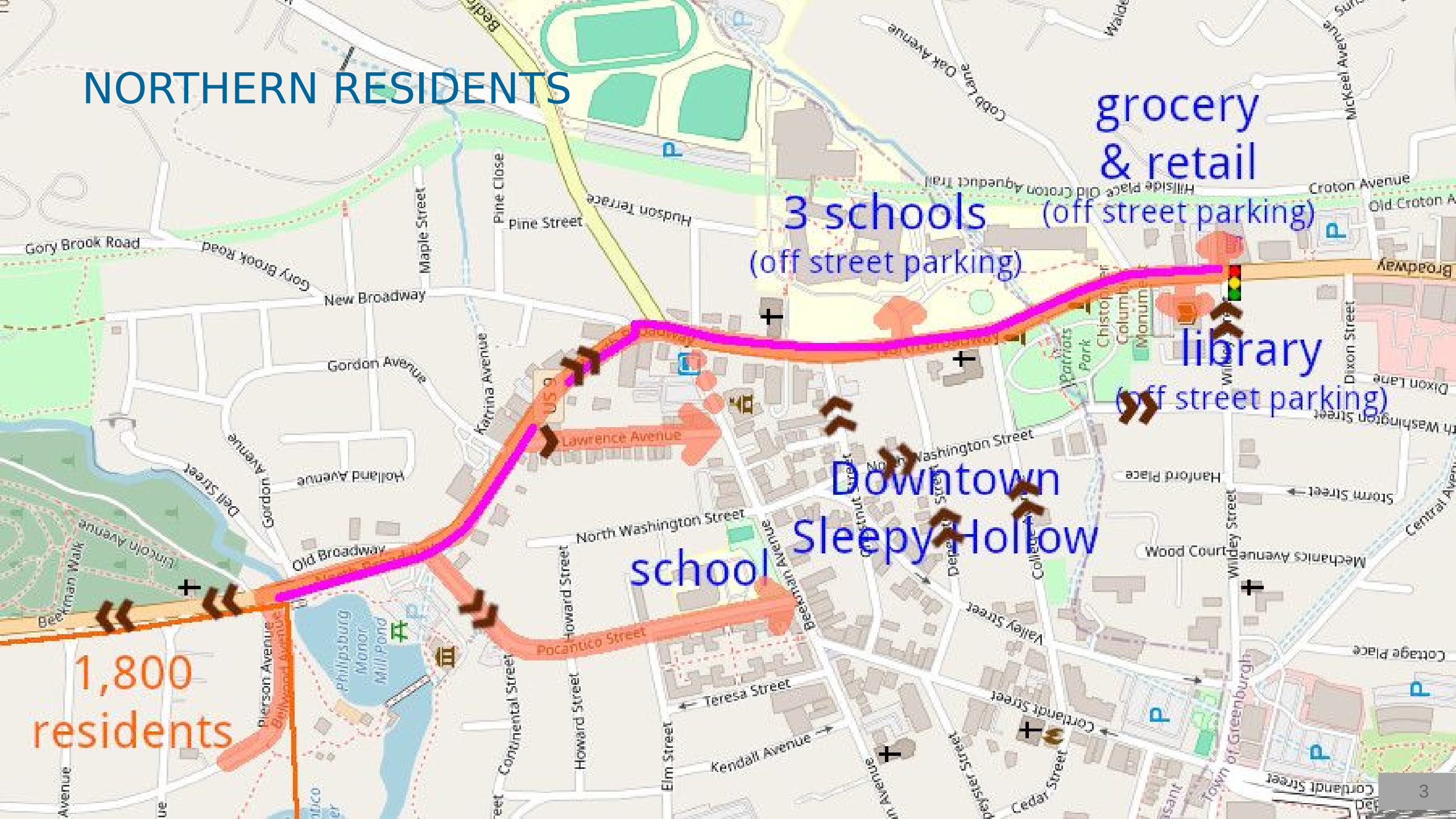


NORTHERN RESIDENTS

1,800 residents

3 schools (off street parking)
grocery & retail (off street parking)
library (off street parking)

Downtown Sleepy Hollow school

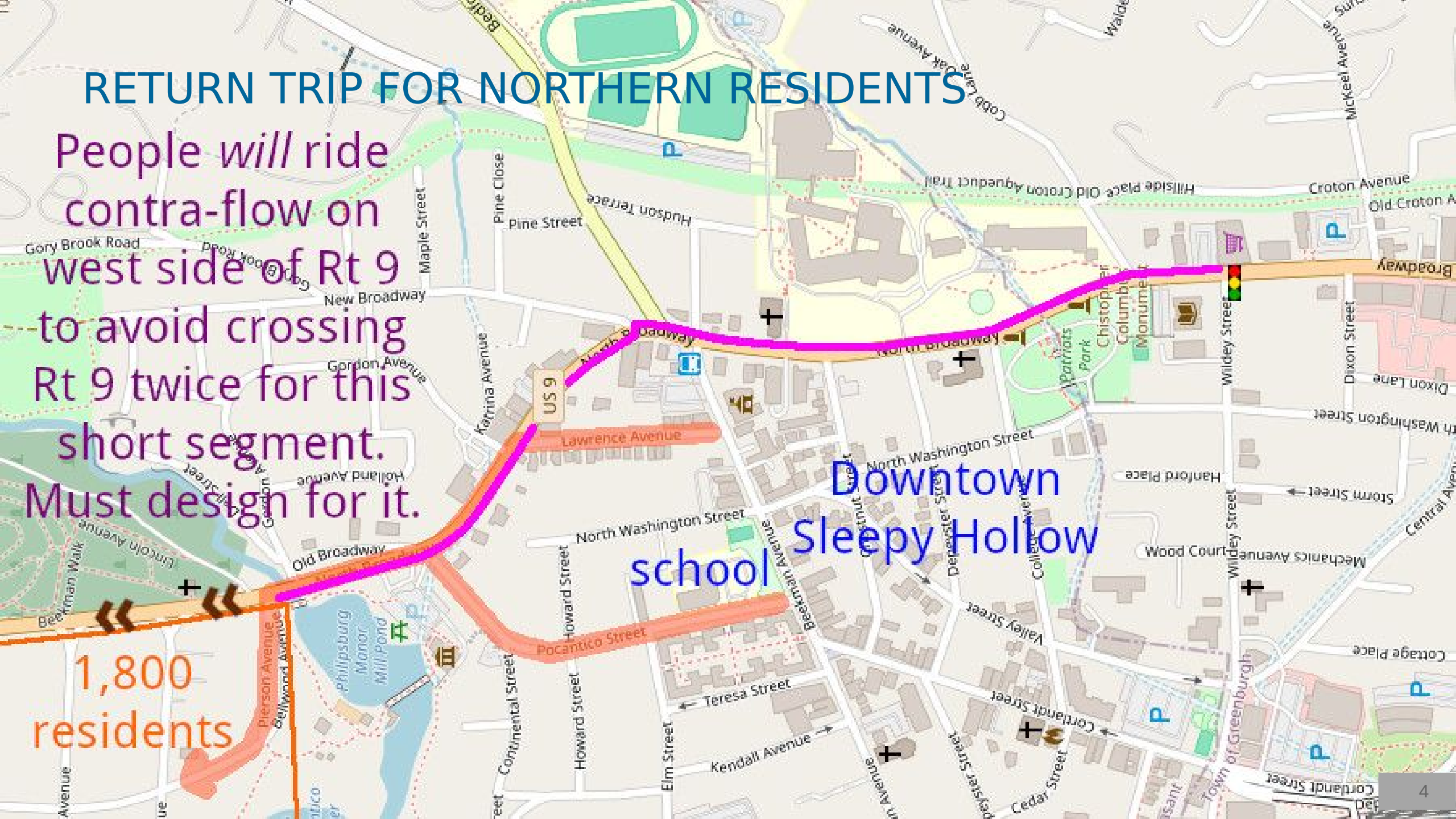


RETURN TRIP FOR NORTHERN RESIDENTS

People will ride
contra-flow on
west side of Rt 9
to avoid crossing
Rt 9 twice for this
short segment.
Must design for it.

1,800
residents

Downtown
Sleepy Hollow
school



DOWNTOWN RESIDENTS

People will ride
contra-flow on
west side of Rt 9
to avoid crossing
Rt 9 twice for this
short segment.
Must design for it.

3 schools
(off street parking)

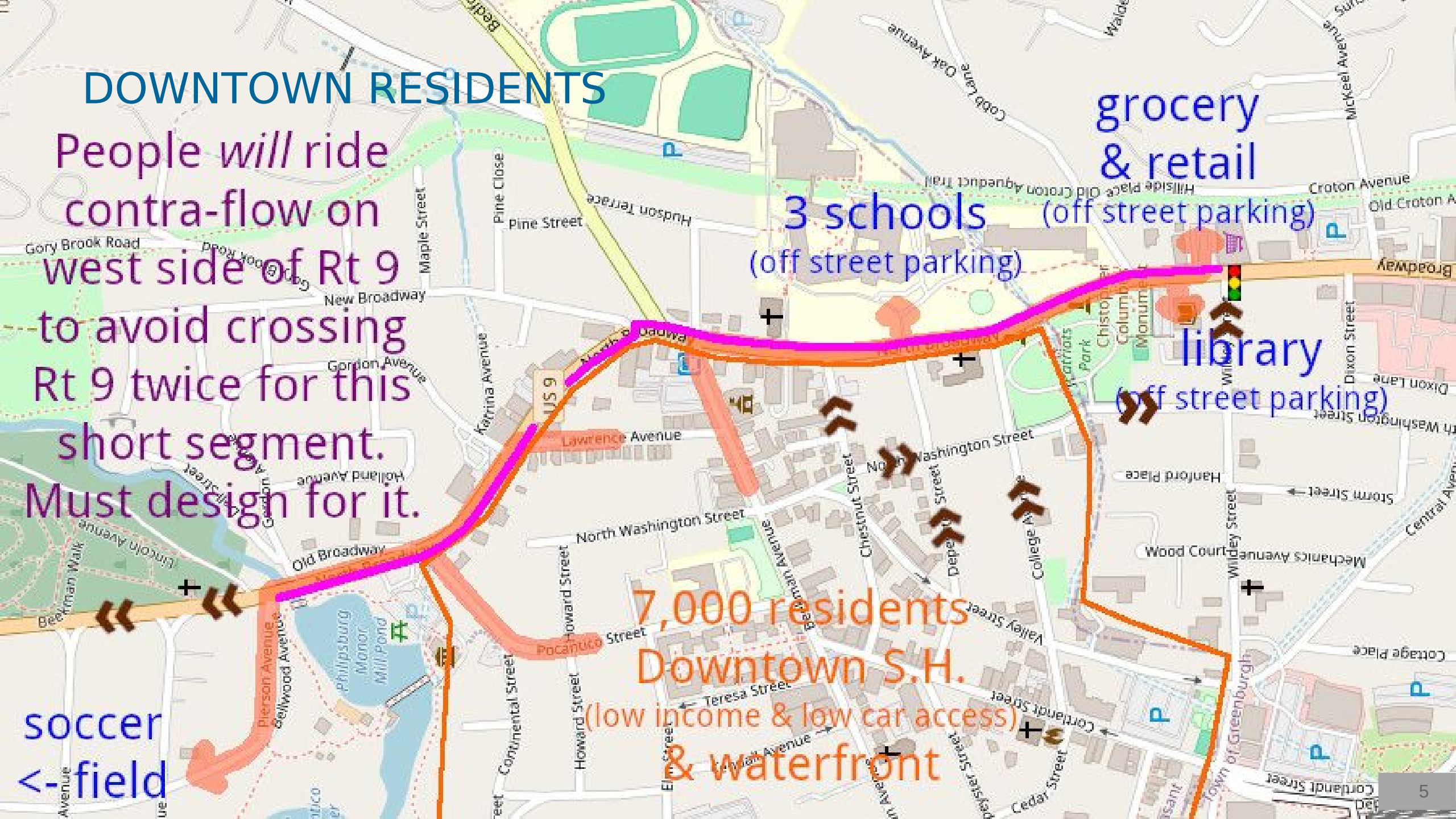
grocery
& retail
(off street parking)

library
(off street parking)

7,000 residents
Downtown S.H.

(low income & low car access)
& waterfront

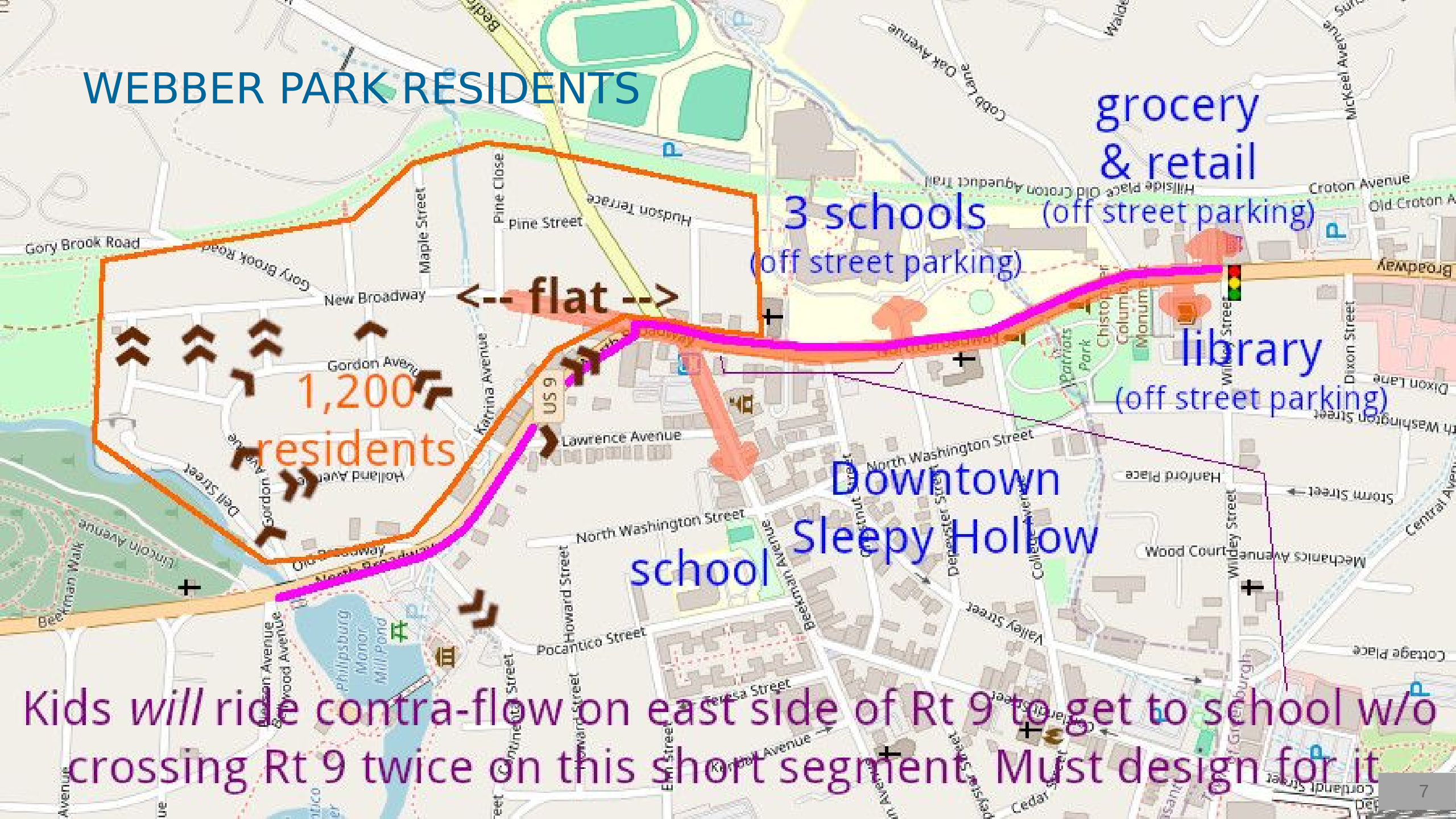
soccer
<-field



SPECIAL EVENTS SHOW WEST SIDE CONNECTION WORKS



WEBBER PARK RESIDENTS



1,200 residents

3 schools (off street parking)

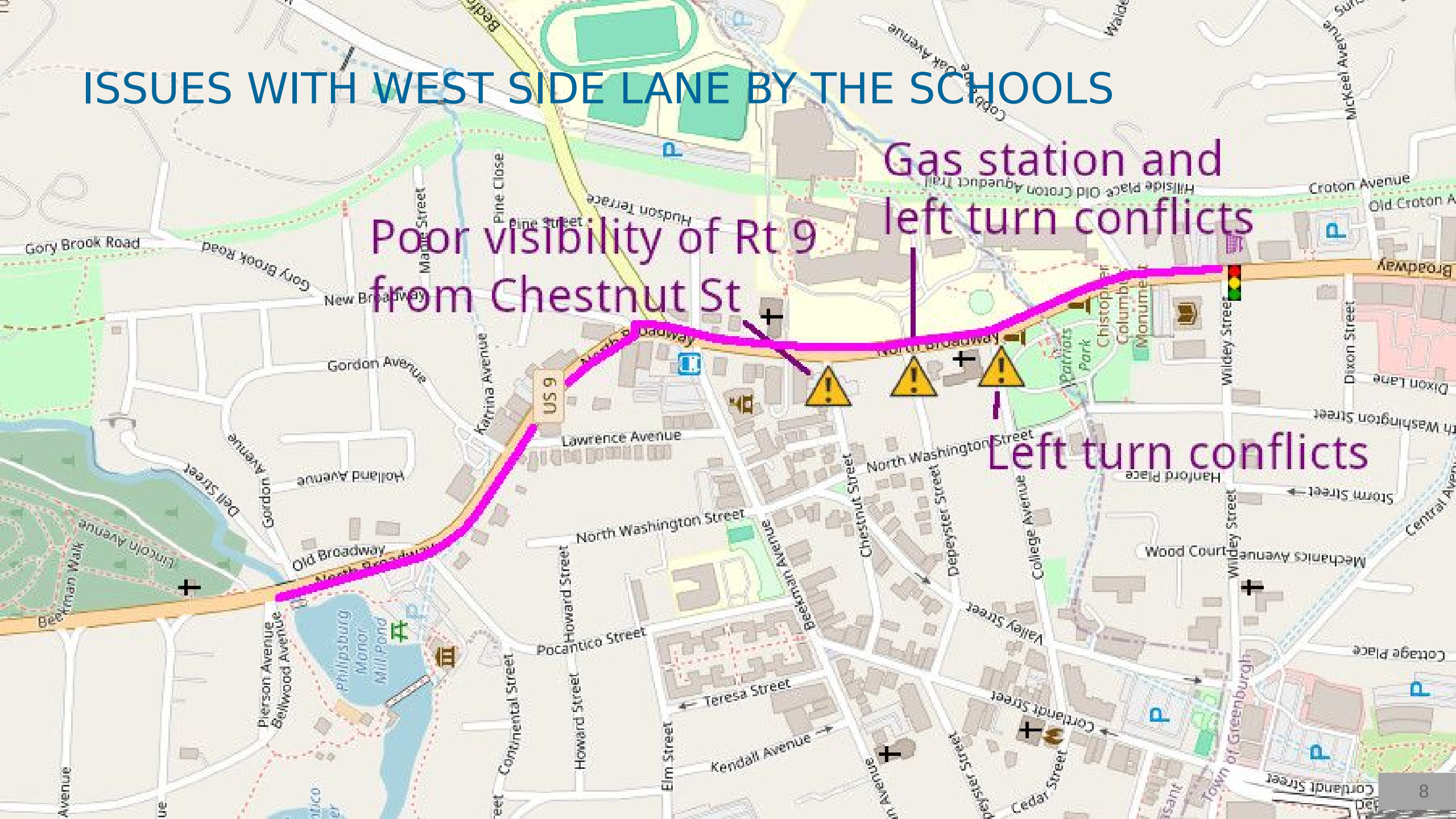
grocery & retail (off street parking)

library (off street parking)

Downtown Sleepy Hollow school

Kids will ride contra-flow on east side of Rt 9 to get to school w/o crossing Rt 9 twice on this short segment. Must design for it

ISSUES WITH WEST SIDE LANE BY THE SCHOOLS

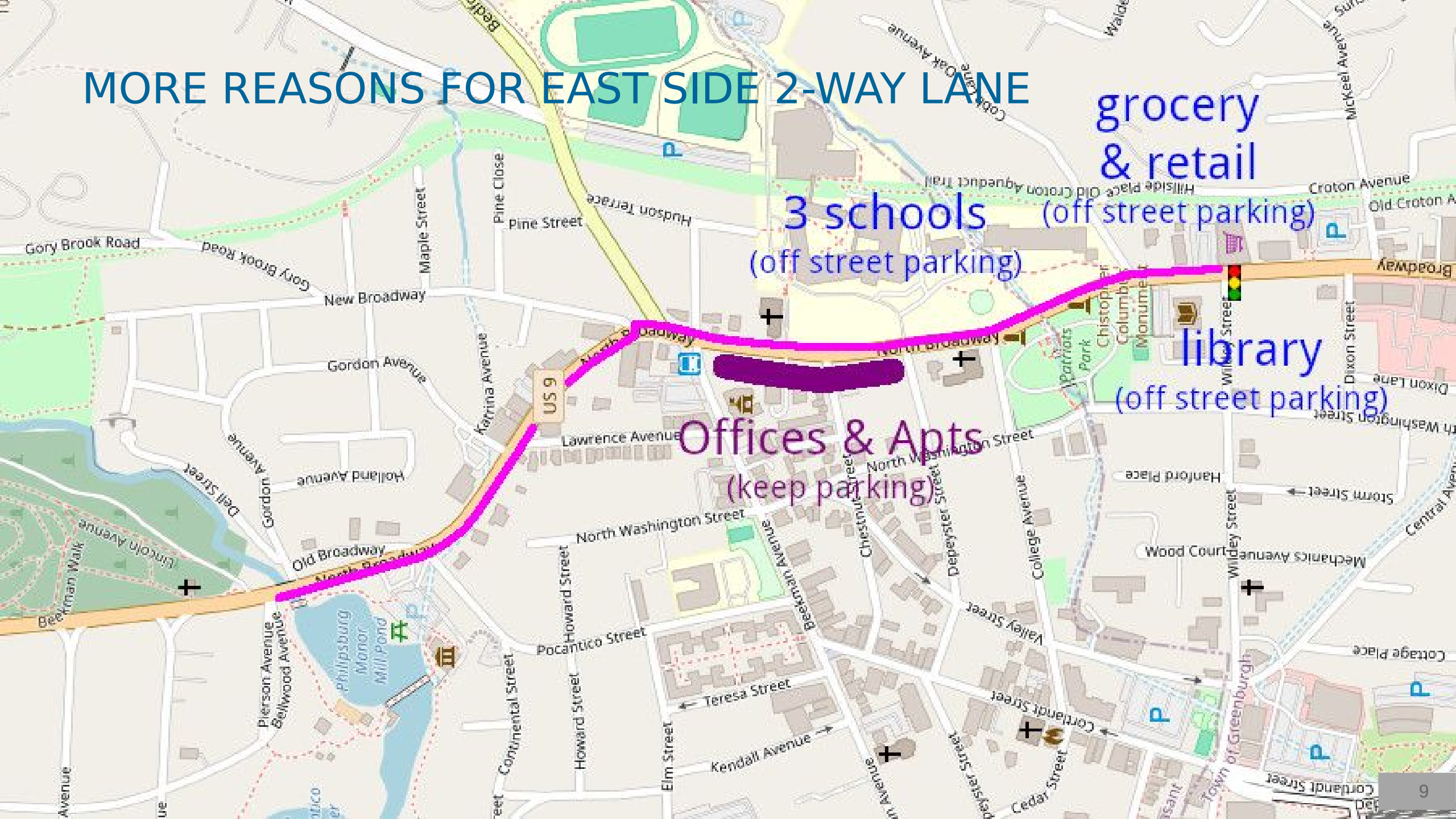


Gas station and left turn conflicts

Poor visibility of Rt 9 from Chestnut St

Left turn conflicts

MORE REASONS FOR EAST SIDE 2-WAY LANE



3 schools
(off street parking)

grocery
& retail
(off street parking)

library
(off street parking)

Offices & Apts
(keep parking)

CONSTRUCTION PROVED PEOPLE HANDLE PARKING CHANGES



CONNECTS TO TARRYTOWN 2-WAY LANE

Future phase 2-way protected mobility lane
(For now, cycling is allowed on eastern sidewalk)

Current phase protected
2-way mobility lane on
east side

Current phase protected
2-way mobility lane on
west side



BARRIERS NEEDED DUE TO MOTOR VEHICLE SIZE & VOLUME



2-WAY LANE MAKES SPACE FOR SOLID BARRIERS



2-WAY LANE MAKES SPACE FOR SOCIAL CYCLING



2-WAY LANE MAKES SPACE FOR VILLAGE EQUIPMENT

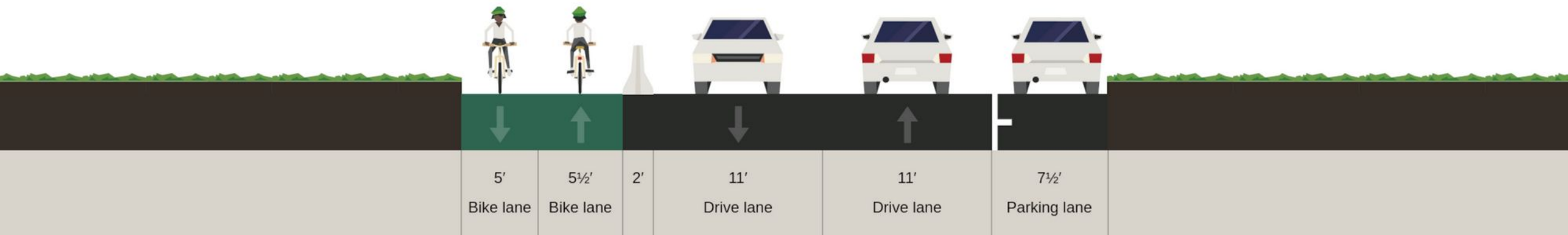


FITS WITHIN EXISTING CURB TO CURB WIDTH

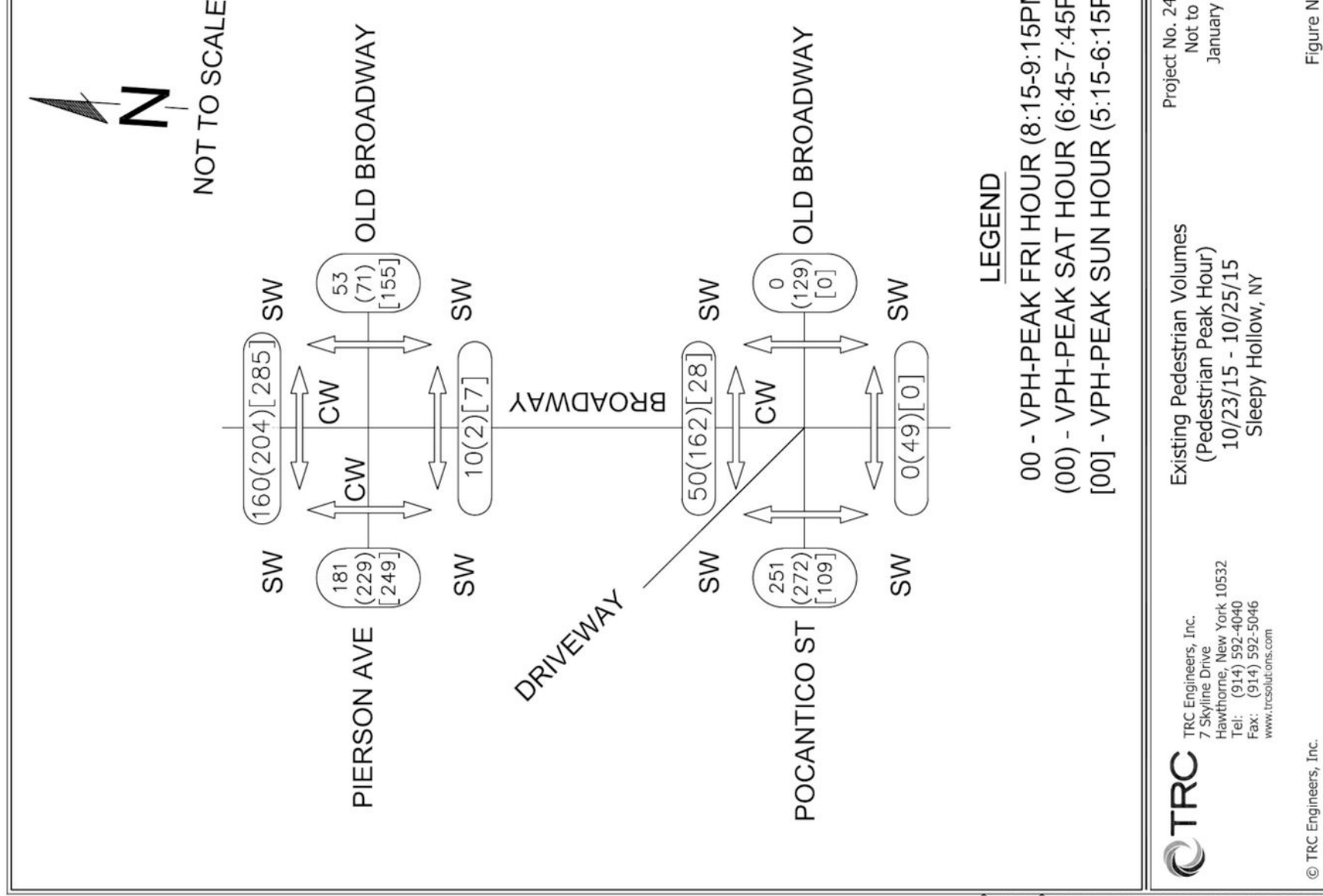
(EXAMPLE BY SLEEPY HOLLOW KOREAN CHURCH, FACING SOUTH)

BETWEEN ROUTE 448 AND WILDEY ST:

- 2-WAY MOBILITY LANE ON EAST SIDE
- PRESERVE PARKING WHERE EASY TO DO (USING SCHOOL PROPERTY)
- SEPARATE WALKING AND CYCLING FACILITIES (RATHER THAN SHARED USE PATH)



SEPARATE WALK/BIKE/DRIVE LANES AT THESE ROUNDABOUTS



Q:\Acad200\242686\Traffic\242686-TrafficFigures.dwg

LET'S MAKE THIS WORK!

